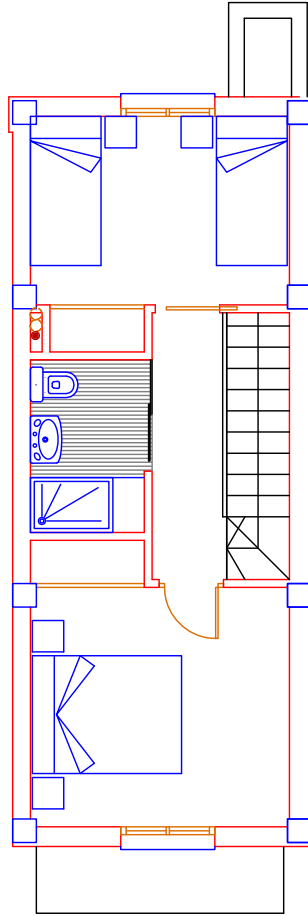
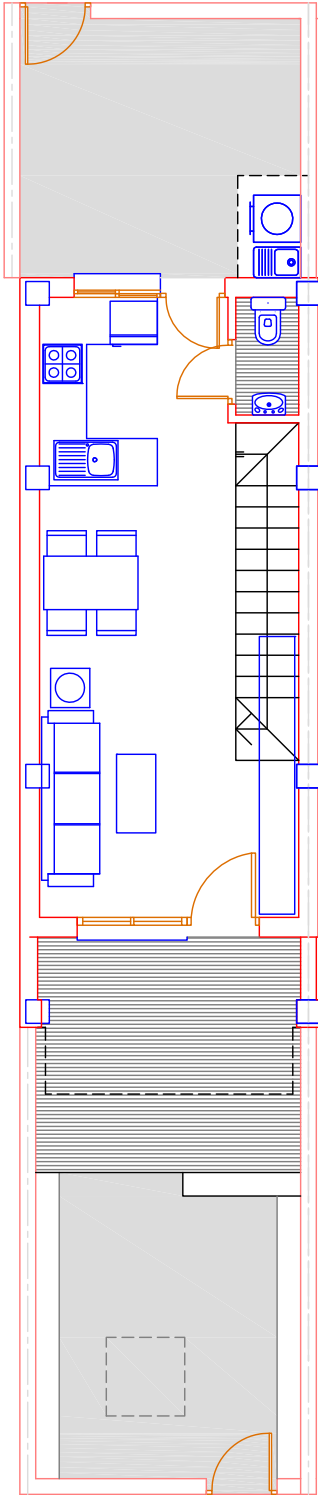
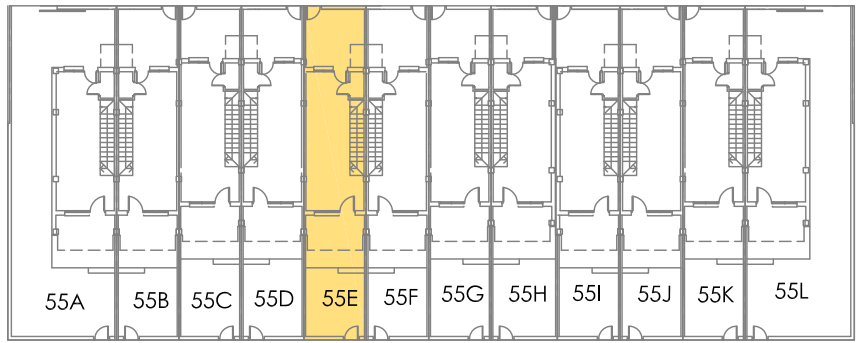


55E



MODELO-A

SUP. PL.BAJA	30,87 m2
SUP. PL.ALTA	35,09 m2
TERRAZA CUBIERTA	6,82 m2

TOTAL SUP. CONSTR	72,78 m2
+ TERRAZA DESC	4,00 m2
JARDIN + PATIO	27,84 m2

SUPERFICIE PARCELA : 69,53 m2

