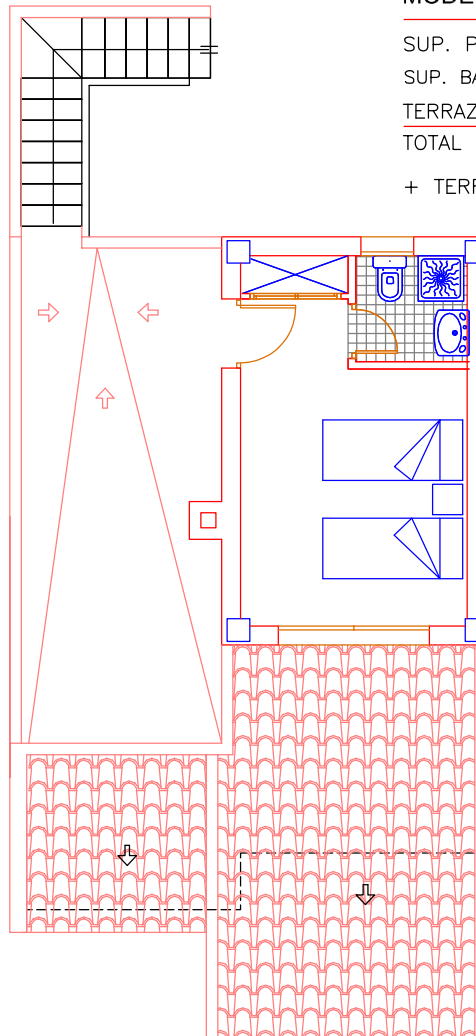
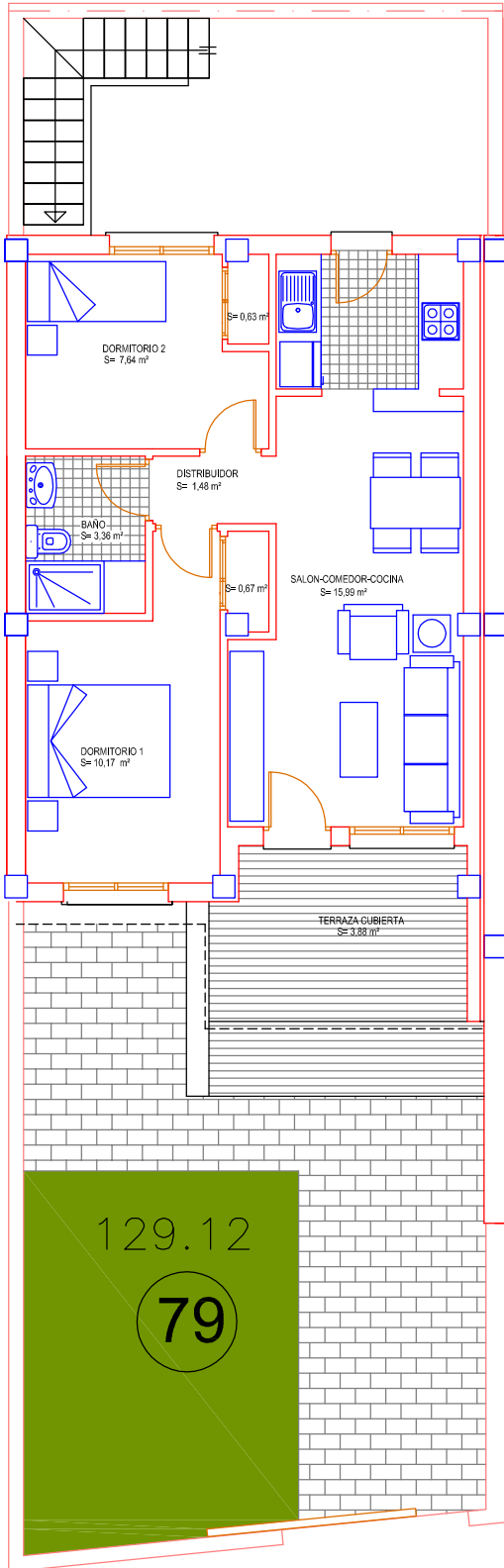


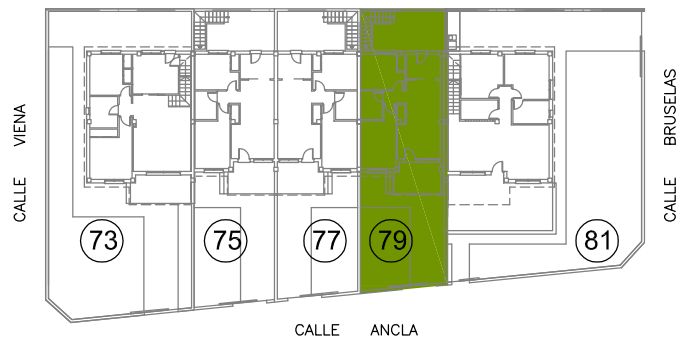
Poligono-3

Fase-I



MODELO-A

SUP. PL.BAJA	52,76 m2
SUP. BAJO CUBIERTA.....	18,25 m2
TERRAZA CUBIERTA	8,28 m2
TOTAL SUP. CONSTR	79,29 m2
+ TERRAZA DESC	1,32 m2



SUPERFICIE PARCELA : 129,12 m2

